

LONG ISLAND II

design Studio ROCHE BOBOIS

rochebobois
PARIS



LONG ISLAND II

design Studio ROCHE BOBOIS

rochebobois
PARIS



CANAPE COMPOSABLE EN 3 ELEMENTS (L.333 x H.89 x P.118 cm)

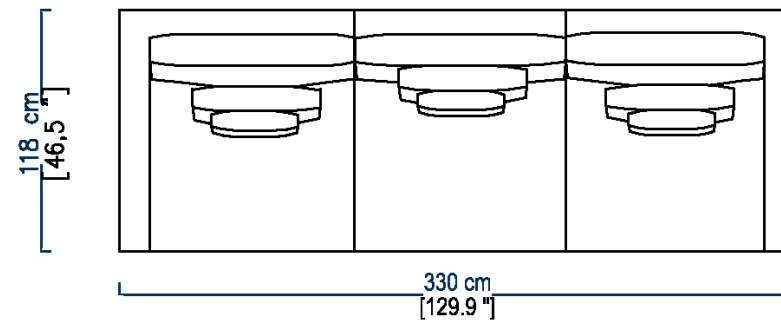
BATARD 1 PLACE ACCOUDOIR GAUCHE L.115 cm
CHAUFFEUSE L.103 cm
BATARD 1 PLACE ACCOUDOIR DROIT L.115 cm

SOFA IN 3 PARTS (131.1" w x 35" h x 46.5" d)

1-SEAT 1 ARM UNIT LEFT ARMREST 45.3"
ARMLESS CHAIR 40.6"
1-SEAT 1 ARM UNIT RIGHT ARMREST 45.3"

SOFA COMPONIBLE EN 3 ELEMENTOS (L.333 x H.89 x P.118 cm)

BATARD 1 PL L.115 APY. IZQUIERDO
CHAUFFEUSE L.103 cm
BATARD 1 PL. L 115 cm APY. DERECHO



LONG ISLAND II

design Studio ROCHE BOBOIS

rochebobois
PARIS



INFORMATIONS TECHNIQUES / TECHNICAL SPECIFICATIONS / CARACTERISTICAS TECNICAS

Structure bois FSC : Sapin massif et panneaux de particules (CARB)
Structure version convertible : Multiplis de bouleau et sapin et panneaux de particules (CARB)
Suspension : Sangles élastiques entrecroisées
Coussins d'assise : Plumes d'oie et canard et fibres polyester 100 gr, sur âme de mousse polyuréthane bi-densité 21-30 kg/m³
Coussins d'assise version convertible : Mousse polyuréthane bi-densité 35-75 kg/m³ et fibre 650 gr
Coussins de dossier : Plumes d'oie et canard et fibres polyester 100 gr
Coussins déco : Plumes d'oie et canard et fibres polyester 100 gr
Piétement : Hêtre massif teinté wengé

FSC wood structure: Solid fir wood and engineered composite wood (CARB)
Structure sofa-bed version: Birch and fir plywood and engineered composite wood (CARB)
Suspension: Cross-webbing elastic straps
Seat cushion: Goose and duck feathers and polyester fibers 100 gr on bi-density polyurethane foam core 21-30 kg/m³
Seat cushion sofa-bed version: Bi-density polyurethane foam 35-75 kg/m³ and fibre 650 gr
Back cushion: Goose and duck feathers and polyester fibers 100 gr
Deco cushions: Goose and duck feathers and polyester fibers 100 gr
Base: Solid beech with stain finish, col. wengé

Estructura de madera FSC: Abeto macizo y paneles de partículas (CARB)
Estructura versión convertible: Multilaminado de abedul y abeto y paneles de partículas (CARB)
Suspensión: Cinchas elasticas entrecruzadas
Cojines de asiento: Plumas de oca y pato y fibra de poliéster de 100 gr. sobre alma de espuma de poliuretano bi-densidad 21-30 kg/m³
Cojines de asiento versión convertible: Espuma de poliuretano bi-densidad 35-75 kg/m³ y fibras 650 gr.
Cojines de respaldo: Plumas de oca y pato y fibra de poliéster de 100 g
Cojines de decoración: Plumas de oca y pato y fibra de poliéster de 100 g
Patas: Haya maciza tintada wengé

OBSERVATIONS / OBSERVATIONS / OBSERVACIONES:

- Fabrication Européenne
- Entièrement déshabillable
- Coussins de dossier réversibles
- Modèle réalisable dans tous les revêtements de la collection Roche Bobois
- Made in Europe
- Entirely removable covers
- Reversible back cushions
- Model available in all materials from the ROCHE BOBOIS collection

- Fabricacion europea
- Completamente desfundable
- Cojines de respaldo reversibles
- Modelo realizable en todos los revestimientos de la colección Roche Bobois

OPTIONS / OPTIONAL / OPCIONES :

- Eléments disponibles en 4 profondeurs : P.103, 108, 113 et 118 cm (sauf canapé-lit)
- Existe en version convertible (couchage 140 x 200 cm et 160 x 200 cm) ; épaisseur du matelas : 14 cm
- Passepoil contrasté ou ton sur ton
- Confort normal ou ferme
- Coussins déco

- Elements available in 4 different depths: D. 103, 108, 113 and 118 cm (except sofa-bed)
- Sofa-bed version available (mattress 140 x 200 cm and 160 x 200 cm); mattress thickness: 14 cm
- Contrasting or tone on tone piping
- Standard or firm comfort
- Deco cushions

- Elementos disponibles en 4 profundidades: P. 103, 108, 113 y 118 cm (excepto sofá-cama)
- Existe en versión convertible (colchón 140 x 200 cm. y 160 x 200 cm.); grosor del colchón: 14 cm.
- Ribete contrastado o tono sobre tono
- Confort normal o firme
- Cojines decorativos

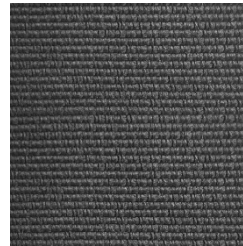
PASSEPOIL : COLORIS DISPONIBLES / PIPING: AVAILABLE COLOURS / RIBETE: COLORES DISPONIBLES



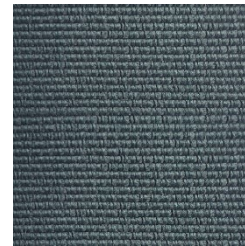
40 Blanc



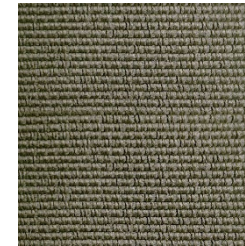
41 Nero



46 Ferro



49 Asfalto



50 Sahara



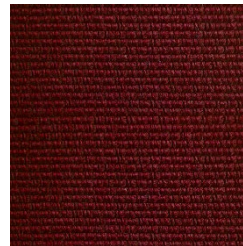
117 Navy



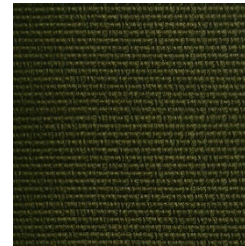
63 Senape



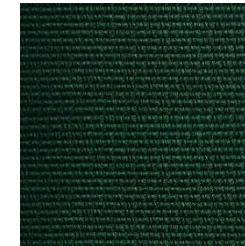
5 Rubino



88 Amaranto



125 Olivia



132 Verde Bottiglia



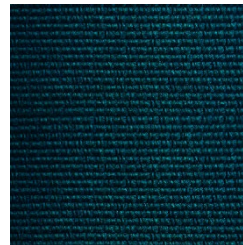
44 Cenere



135 Nuvola



136 Sabbia



139 Pavone



163 Pepe



168 Castoro

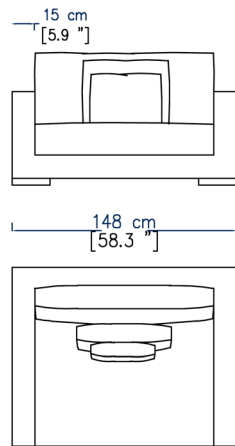
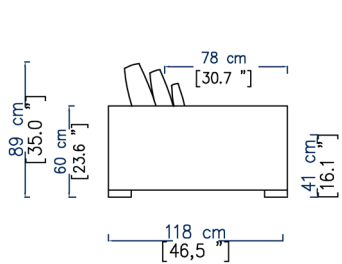


57 Fumo

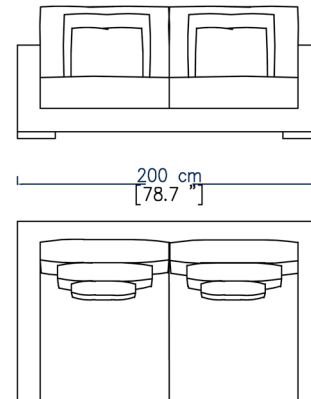
LONG ISLAND II

design Studio ROCHE BOBOIS

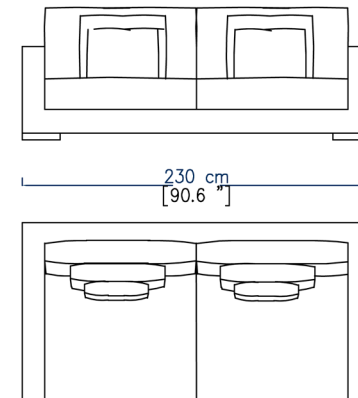
rochebobo
PARIS



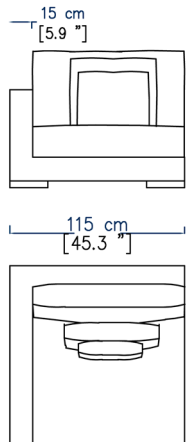
LL03
CANAPE 1,5 PLACE
1,5-SEAT SOFA
SOFA 1,5 PLAZA



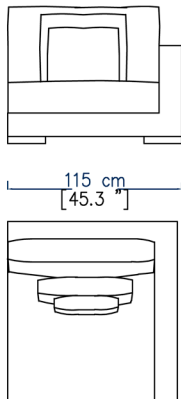
LL02
CANAPE 2,5 PLACES
2,5-SEAT SOFA
SOFA 2,5 PLAZAS



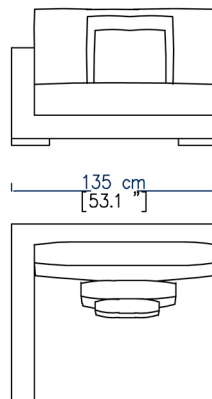
LL01
GRAND CANAPE 3 PLACES
LARGE 3-SEAT SOFA
GRAN SOFA 3 PLAZAS



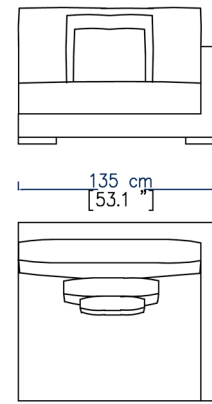
LL12
BATARD 1 PLACE ACC. GAUCHE
1-SEAT 1-ARM UNIT LEFT ARMREST
BATARD 1 PL. APY. IZQUIERDO



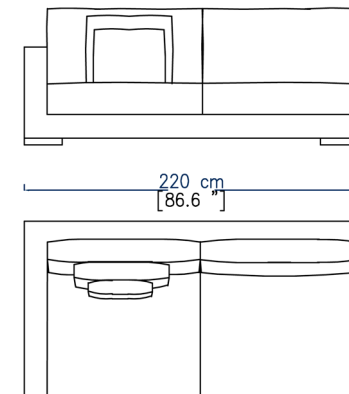
LL11
BATARD 1 PLACE ACC. DROIT
1-SEAT 1-ARM UNIT RIGHT ARMREST
BATARD 1 PL. APY. DERECHO



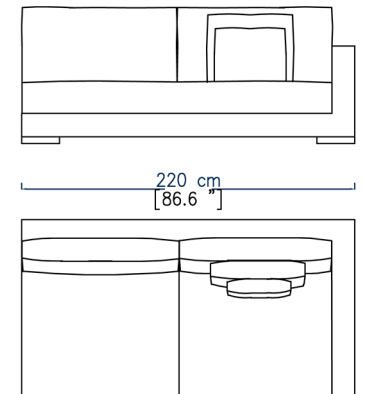
LL10
BATARD 1,5 PLACE ACC. GAUCHE
1,5-SEAT 1-ARM UNIT LEFT ARMREST
BATARD 1,5 PL. APY. IZQUIERDO



LL09
BATARD 1,5 PLACE ACC. DROIT
1,5-SEAT 1-ARM UNIT RIGHT ARMREST
BATARD 1,5 PL. APY. DERECHO



LL08
BATARD 3 PLACES ACC. GAUCHE
3-SEAT 1-ARM UNIT LEFT ARMREST
BATARD 3 PL. APY. IZQUIERDO

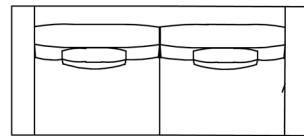
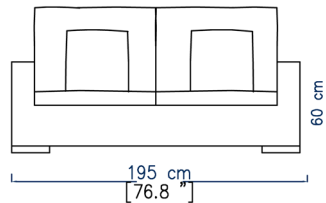
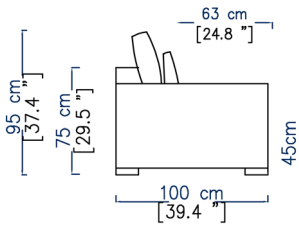


LL07
BATARD 3 PLACES ACC. DROIT
3-SEAT 1-ARM UNIT RIGHT ARMREST
BATARD 3 PL. APY. DERECHO

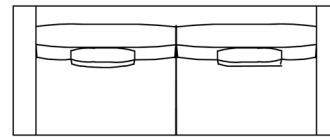
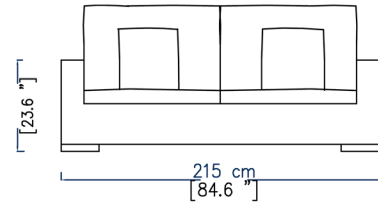
LONG ISLAND II

design Studio ROCHE BOBOIS

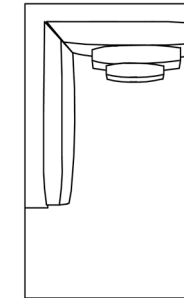
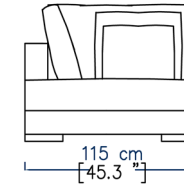
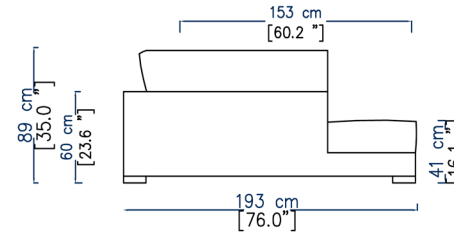
rochebobois
PARIS



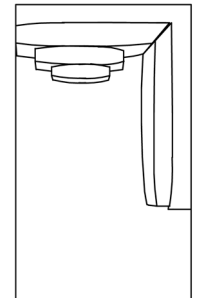
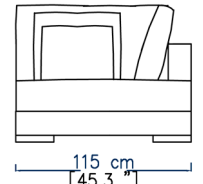
LL05
CANAPE-LIT 2,5 PLACES
2,5-SEAT SOFA BED
SOFA CAMA 2 PLAZAS



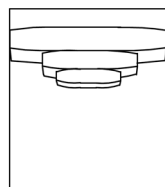
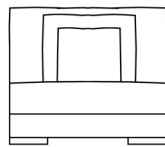
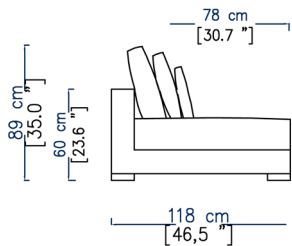
LL04
CANAPE-LIT 3 PLACES
3-SEAT SOFA BED
SOFA CAMA 3 PLAZAS



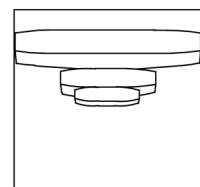
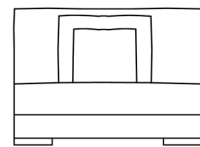
LL15
ANGLE/MERIDIENNE GAUCHE
CORNER/MERIDIENNE LEFT
ANGULO/MERIDIENNE IZQUIERDO



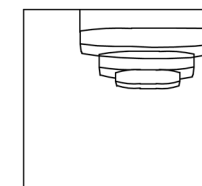
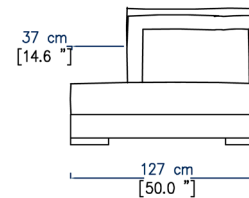
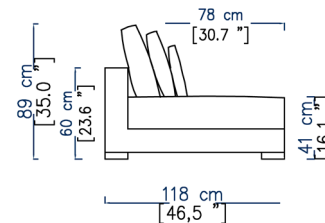
LL14
ANGLE/MERIDIENNE DROITE
CORNER/MERIDIENNE RIGHT
ANGULO/MERIDIENNE DERECHO



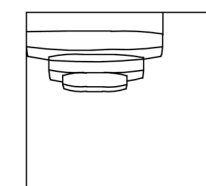
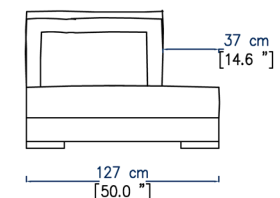
LL18
CHAUFFEUSE
ARMLESS CHAIR
CHAUFFEUSE



LL06
BANQUETTE 1,5 PLACE
1,5-SEAT ARMLESS SOFA
SOFA BANQUETA 1,5 PLAZA



LL17
ELEMENT TERMINAL GAUCHE
LEFT END UNIT ELEMENT
ELEMENTO TERMINAL IZQUIERDO

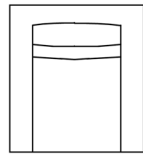
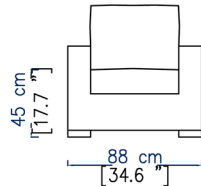
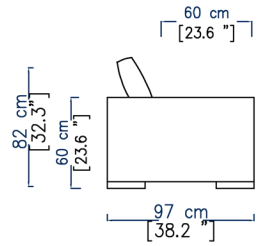


LL16
ELEMENT TERMINAL DROIT
RIGHT END UNIT ELEMENT
ELEMENTO TERMINAL DERECHO

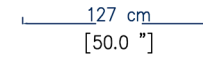
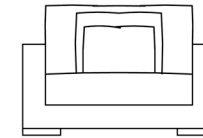
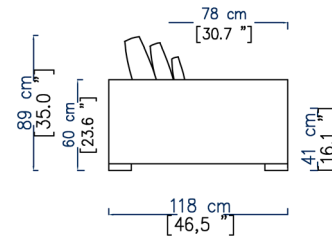
LONG ISLAND II

design Studio ROCHE BOBOIS

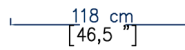
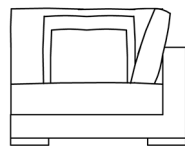
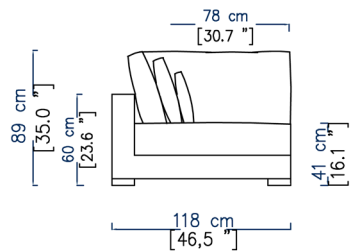
rochebobois
PARIS



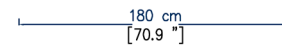
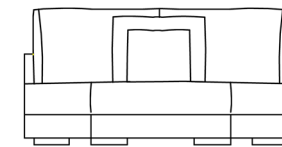
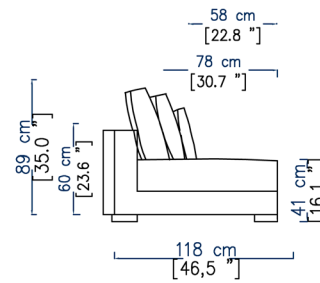
LL21
FAUTEUIL ED 2015
ARMCHAIR ED 2015
SILLON ED 2015



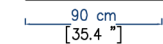
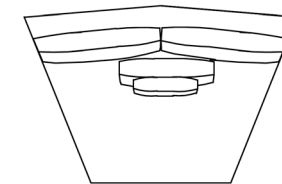
LL20
GRAND FAUTEUIL
LARGE ARMCHAIR
GRAN SILLON



LL13
ANGLE CARRE
SQUARE CORNER
ANGULO CUADRADO



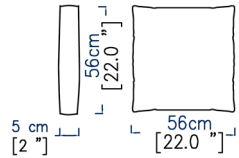
LL19
CHAUFFEUSE EN V
V-SHAPED ARMLESS CHAIR
CHAUFFEUSE EN V



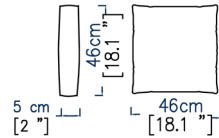
LONG ISLAND II

design Studio ROCHE BOBOIS

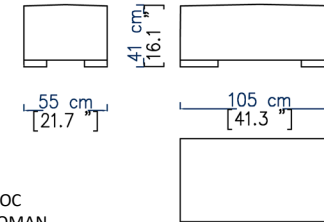
rochebobois
PARIS



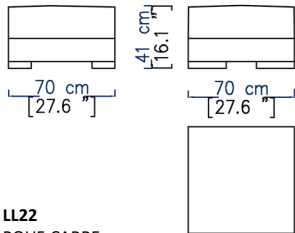
LL28
COUSSIN CARRE MM 56X56X5
SQUARE CUSHION MM 22"X22"X2"
COJIN CUADRATO MM 56X56X5



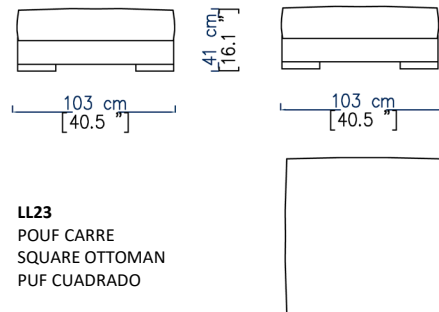
LL27
COUSSIN CARRE PM 46X46X5
SQUARE CUSHION PM 18,1"X18,1"X2"
COJIN CUADRATO PM 46X46X5



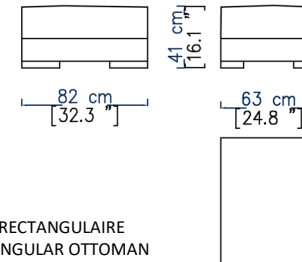
LL25
POUF RECTANGULAIRE MONOBLOC
RECTANGULAR MONOBLOC OTTOMAN
PUF RECTANGULAR MONOBLOC



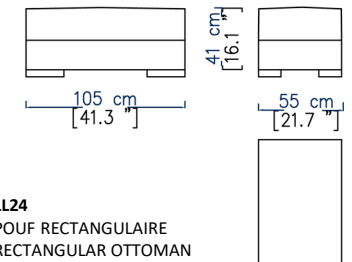
LL22
POUF CARRE
SQUARE OTTOMAN
PUF CUADRADO



LL23
POUF CARRE
SQUARE OTTOMAN
PUF CUADRADO



LL26
POUF RECTANGULAIRE
RECTANGULAR OTTOMAN
PUF RECTANGULAR



LL24
POUF RECTANGULAIRE
RECTANGULAR OTTOMAN
PUF RECTANGULAR



La structure de ce canapé est certifiée FSC™ mixte. Elle est composée de matériaux provenant de forêts certifiées FSC™ gérées de façon responsable et d'autres sources contrôlées.
This sofa's structure has FSC™ Mix certification. It is made with a mixture of materials from responsibly managed, FSC™-certified forests and from other controlled sources.
La estructura de este sillón está certificada FSC™ mixto. Esta compuesta de materiales provenientes de bosques certificados FSC™ gestionados responsablemente y de otras fuentes controladas.